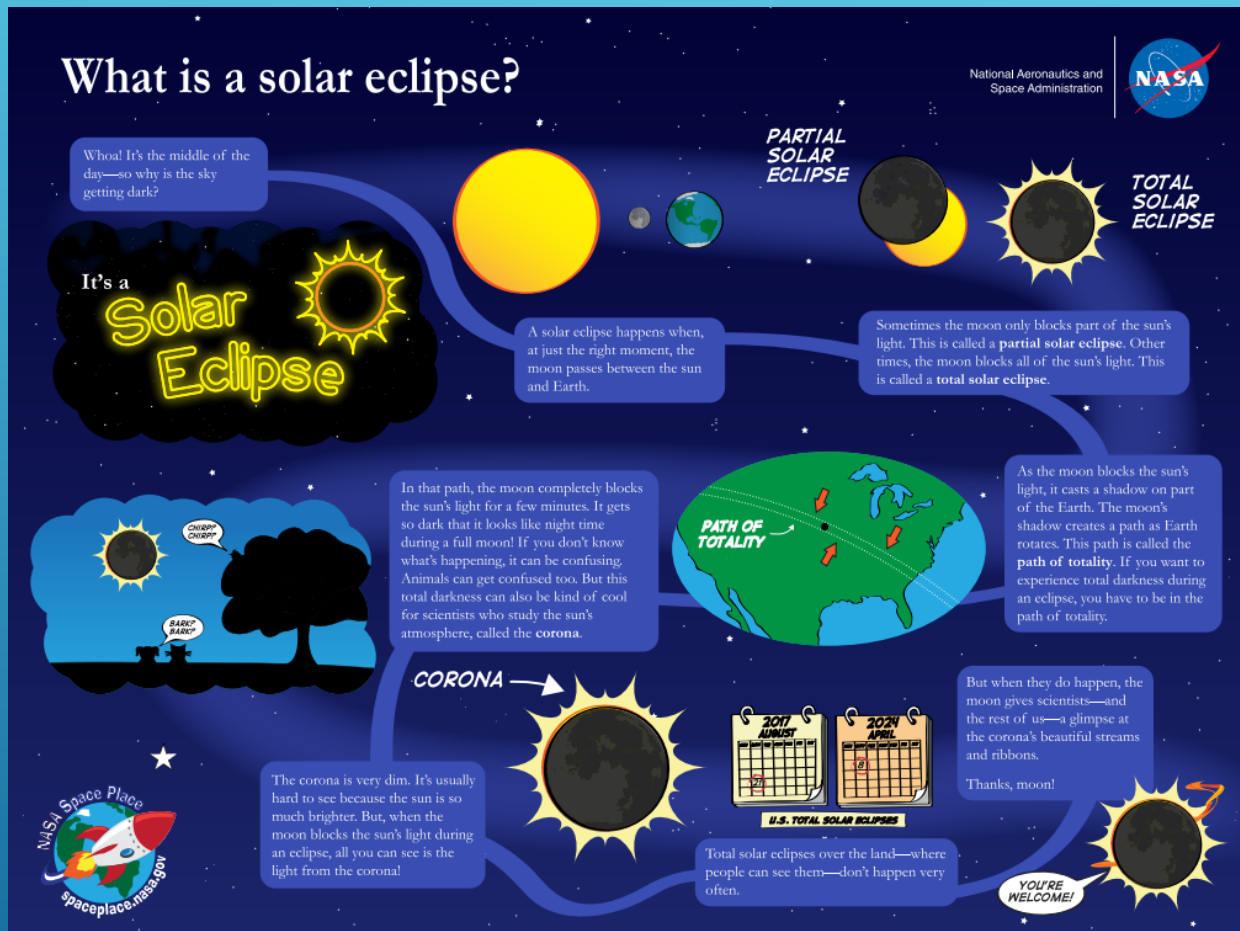


SOLAR ECLIPSE PLANNING FOR



THE SOLAR ECLIPSE EVENT
ON APRIL 8, 2024



WHAT IS A SOLAR ECLIPSE:

A solar eclipse occurs when a portion of the Earth is engulfed in a shadow cast by the Moon which fully or partially blocks sunlight. This occurs when the Sun, Moon and Earth are aligned. Such alignment coincides with a new moon indicating the Moon is closest to the ecliptic plane.

~Wikipedia

- ▶ THE LAST TOTAL SOLAR ECLIPSE VISIBLE IN OHIO WAS IN 1806.
- ▶ THE NEXT TOTAL SOLAR ECLIPSE VISIBLE IN OHIO WILL BE IN THE YEAR 2444.
- ▶ THIS MEANS THE SOLAR ECLIPSE ON APRIL 8, 2024:
- ▶ WILL BE A VERY SPECIAL EXPERIENCE!

HISTORY OF SOLAR ECLIPSES IN OHIO

County Population Estimate for 2024 Eclipse

*Based on 2020 US Census, 2017 eclipse after action reports, and county location in relation to the eclipse pathway

County	Population	Population Influx Estimation*
Licking	178,519	357,038
Logan	46,150	92,300
Lorain	312,964	938,892
Lucas	431,279	862,558
Madison	43,824	87,648
Mahoning	228,814	457,628
Marion	65,319	130,638
Medina	182,470	364,940
Meigs	22,210	44,420
Mercer	42,528	85,056
Miami	108,774	217,548
Monroe	13,385	26,770
Montgomery	537,309	1,074,618
Morgan	13,802	27,604
Morrow	34,950	69,900
Muskingum	86,410	172,820
Noble	14,115	28,230
Ottawa	40,364	80,728
Paulding	18,806	37,612
Perry	35,408	70,816
Pickaway	58,539	117,078
Pike	27,088	54,176
Portage	161,791	323,582
Preble	40,999	81,998
Putnam	34,451	68,902
Richland	124,936	249,872
Ross	77,093	154,186
Sandusky	58,896	117,792
Scioto	74,008	148,016
Seneca	55,069	110,138
Shelby	48,230	96,460
Stark	174,853	349,706
Summit	540,428	1,080,856
Trumbull	201,977	403,954
Tuscarawas	93,263	186,526
Union	62,784	125,568
Van Wert	28,931	57,862
Vinton	12,800	25,600
Warren	242,337	484,674
Washington	59,771	119,542
Wayne	116,894	233,788
Williams	37,102	74,204
Wood	132,248	264,496
Wyandot	21,900	43,800

Version 1 - 3/4/2022

Zones	Definition
Zone 1	Counties along the central line of the eclipse; Potential for 3x county population
Zone 2	Counties completely within the totality path; Potential for 2x county population
Zone 3	Counties partially within the totality path; Potential for 2x county population
Zone 4	Counties that are outside the totality path; Potential for 1.5x county population



Total Solar Eclipse Path through Ohio
April 8, 2024



Total Solar Eclipse Path through Ohio
April 8, 2024



EXPECTATIONS IN RICHLAND COUNTY

County Population Estimate for 2024 Eclipse

*Based on 2020 US Census, 2017 eclipse after action reports, and county location in relation to the eclipse pathway

Version 1 - 3/4/2022

County	Population	Population Influx Estimation*
Licking	178,519	357,038
Logan	46,150	92,300
Lorain	312,964	938,892
Lucas	431,279	862,558
Madison	43,824	87,648
Mahoning	228,614	457,228
Marion	65,359	130,718
Medina	182,470	364,940
Meigs	22,210	33,315
Mercer	42,528	85,056
Miami	108,774	217,548
Monroe	13,385	20,078
Montgomery	537,309	1,074,618
Morgan	13,802	20,703
Morrow	34,950	69,900
Muskingum	86,410	129,615
Noble	14,115	21,173
Ottawa	40,364	80,728
Paulding	18,806	37,612
Perry	35,408	53,112
Pickaway	58,539	87,809
Pike	27,088	40,632
Portage	161,791	323,582
Preble	40,999	81,998
Putnam	34,451	68,902
Richland	124,936	249,872
Ross	77,093	115,640
Sandusky	58,896	117,792
Scioto	74,008	111,012
Seneca	55,069	165,207
Shelby	48,230	144,690
Stark	374,853	749,706
Summit	540,428	1,080,856
Trumbull	201,977	403,954
Tuscarawas	93,263	139,895
Union	62,784	125,568
Van Wert	28,931	57,862
Vinton	12,800	19,200
Warren	242,337	484,674
Washington	59,771	89,657
Wayne	116,894	233,788
Williams	37,102	55,653
Wood	132,248	264,496

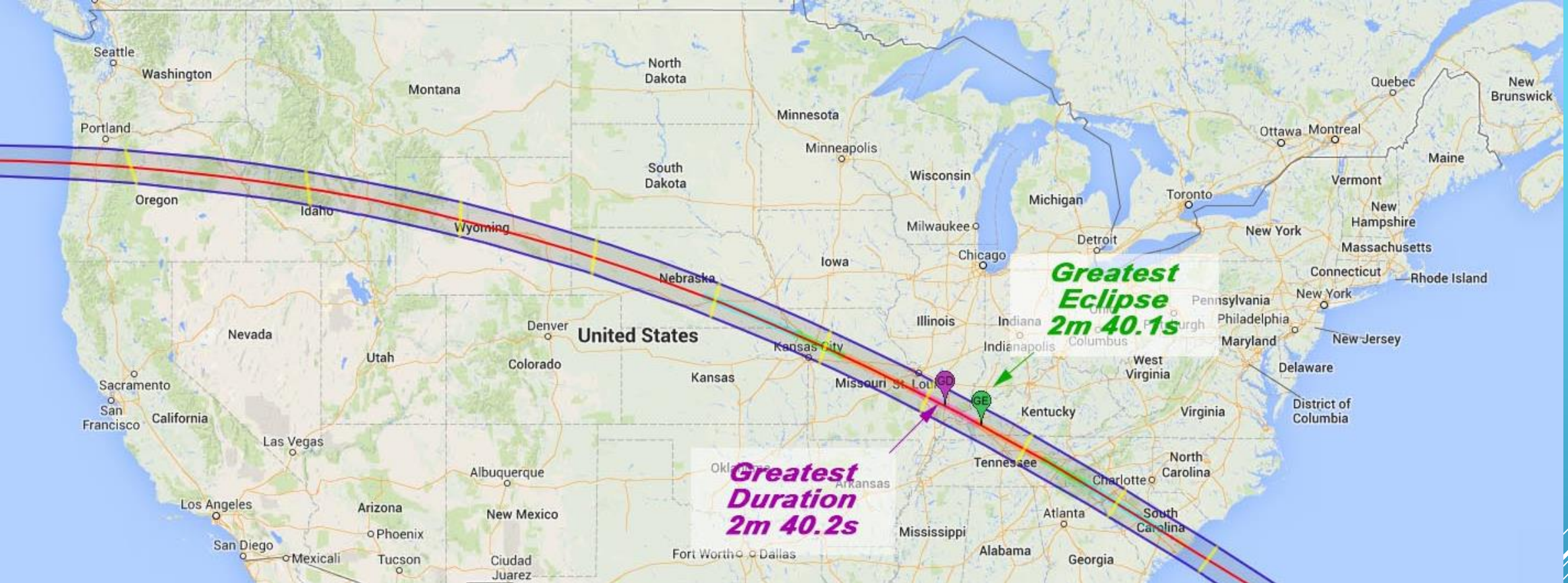
Zones	Definition
Zone 1	Counties along the central line of the eclipse; Potential for 3x county population
Zone 2	Counties completely within the totality path; Potential for 2x county population
Zone 3	Counties partially within the totality path; Potential for 2x county population
Zone 4	Counties that are outside the totality path; Potential for 1.5x county population



Total Solar Eclipse Path through Ohio
April 8, 2024

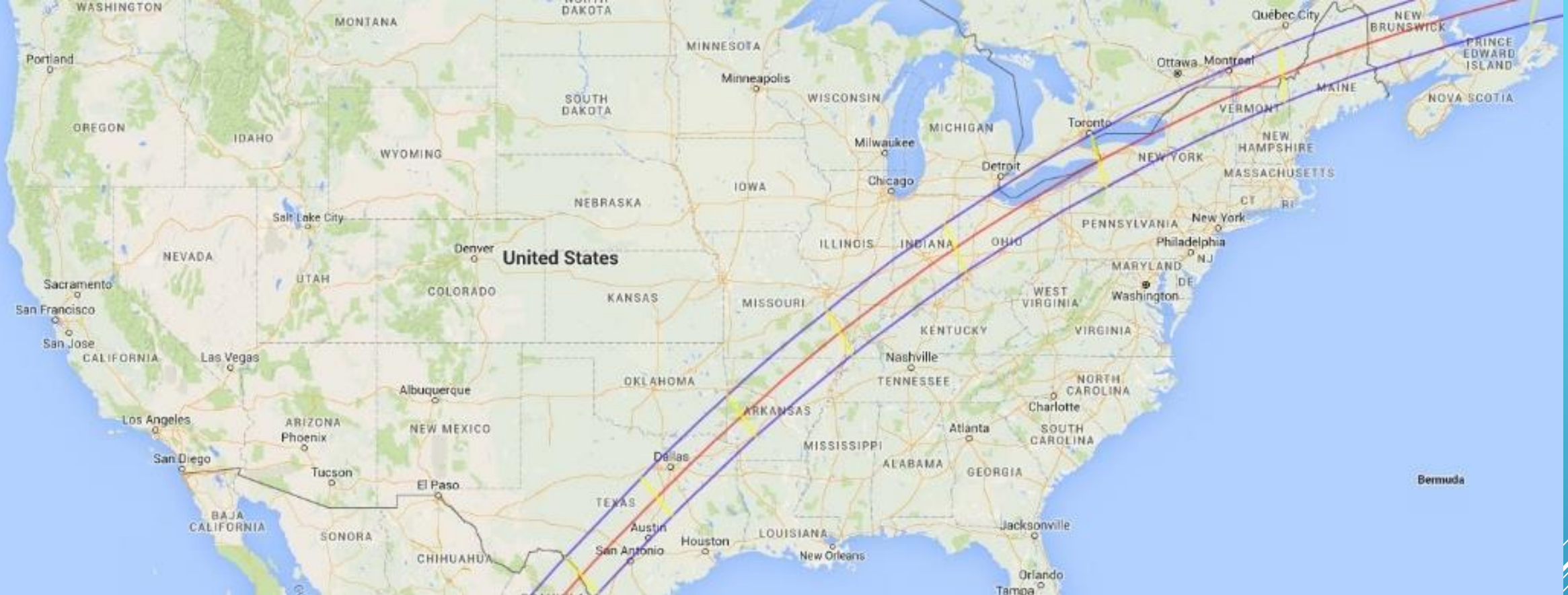


September 30, 2021



2017 GREAT NORTH AMERICAN ECLIPSE

- ▶ 9 states experienced totality
- ▶ Approximately 12,000,000 people lived on the path of totality



2024 GREAT NORTH AMERICAN ECLIPSE

- ▶ 11 States will experience totality
- ▶ Approximately 31,500,000 live on the path of totality

IMPACTS TO RICHLAND COUNTY AND WHY DO WE CARE:

BASED ON PREVIOUS SOLAR ECLIPSES WE CAN EXPECT NUMEROUS UNINTENDED ISSUES TO IMPACT US.

A series of several parallel white lines of varying lengths and slopes, located in the bottom right corner of the slide, creating a modern, abstract graphic element.



TRAFFIC GRIDLOCK



- ▶ PUBLIC SAFETY ISSUES SUCH AS FIRE/EMS/LE CALLS FOR SERVICE.
- ▶ CELL NETWORKS OVERWHELMED DUE TO VOLUME OF DEVICES.
- ▶ NO AVAILABLE HOTEL/MOTEL ROOMS-CAMPGROUNDS FULL.
- ▶ PORTA POT AVAILABILITY
- ▶ DEDICATED VIEWING AREAS> WHERE & CAPACITY.
- ▶ TRAFFIC CONTROL.
- ▶ TRESPASSING ISSUES.
- ▶ MENTAL HEALTH> SUICIDE AWARENESS CAMPAIGN

OTHER ISSUES:

- ▶ MOBILE RADIOS MAY BE AFFECTED.
- ▶ DO WE PURCHASE AND PROVIDE SOLAR VIEWING GLASSES.
- ▶ SCHOOL ISSUES: BUS TRANSPORTATION, CANCEL SCHOOL THAT DAY, ETC.
- ▶ INTERNET OVERWHELMED SLOW NETWORK TRAFFIC POTENTIAL.
- ▶ DISABLED MOTORISTS ON INTERSTATES/STATE ROUTES> 71/30/13 ETC.
- ▶ INCREASE IN HOSPITAL ED VISITS DUE TO ECLIPSE.

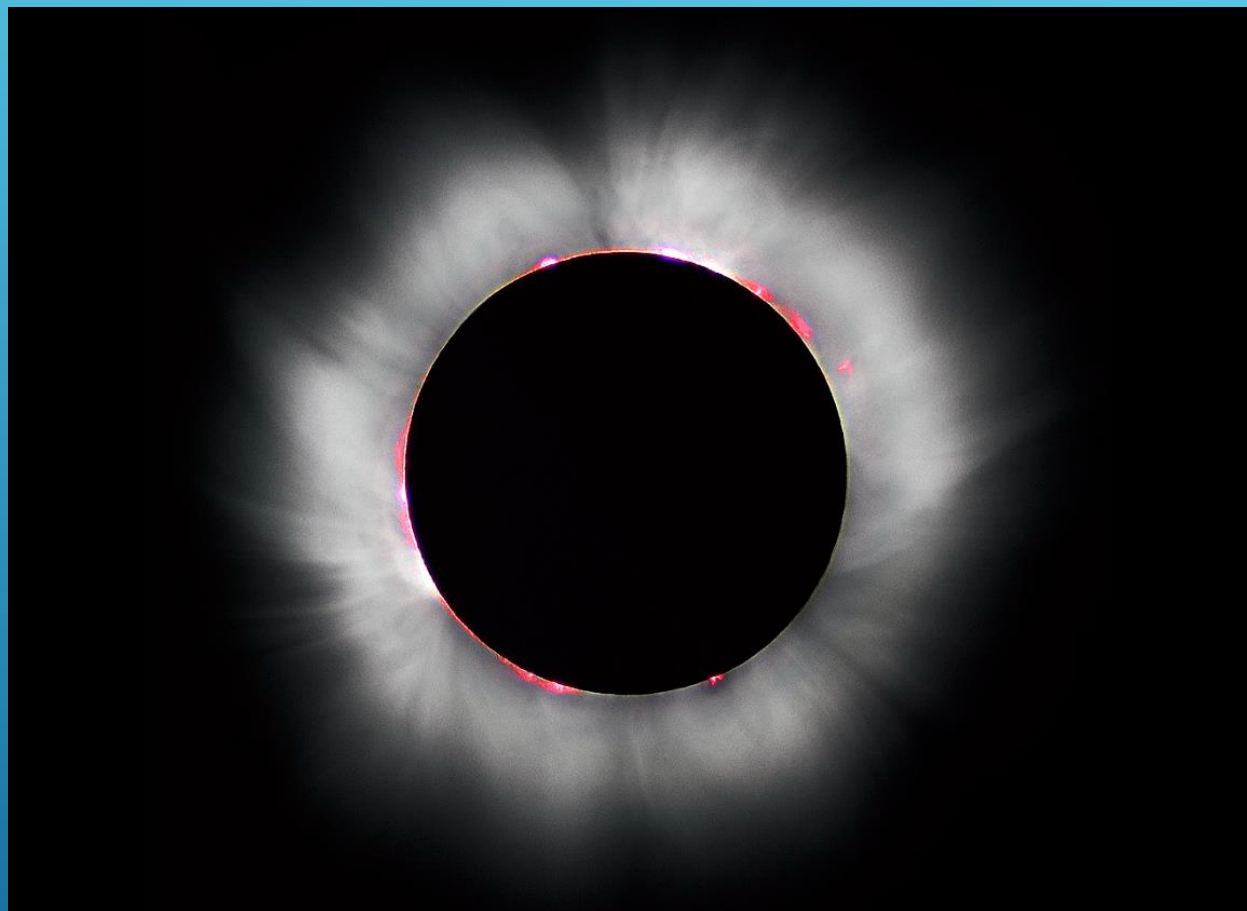
OTHER ISSUES CONTINUED:

- ▶ RICHLAND CO. EMA/ STATE EMA
- ▶ FIRE/EMS/LE
- ▶ RICHLAND PUBLIC HEALTH
- ▶ MENTAL HEALTH BOARD
- ▶ HOSPITALS- OHM, AVITA
- ▶ SCHOOL SUPERINTENDENTS
- ▶ RICHLAND COUNTY ENGINEER
- ▶ ODOT

PARTNER PLANNING/INVOLVEMENT:

- ▶ MANSFIELD RICHLAND CO. PUBLIC LIBRARY
- ▶ RICHLAND CO. CHAMBER OF COMMERCE
- ▶ HOTEL/ MOTEL MANAGEMENT
- ▶ RED CROSS
- ▶ 211
- ▶ AREA PARK DISTRICTS
- ▶ MUNICIPALITIES/VILLAGES/TOWNSHIP ADMINISTRATORS
- ▶ RICHLAND CO. COMMISSIONERS
- ▶ NATIONAL WEATHER SERVICE
- ▶ RICHLAND COUNTY REGIONAL PLANNING

PARTNER PLANNING/INVOLVEMENT:



START YOUR PLANNING
NOW!



- ▶ PRE-IDENTIFIED VIEWING LOCATIONS
- ▶ HOW DO WE HANDLE THE TRAFFIC GRIDLOCK AFTER EVENT
- ▶ TRAFFIC CONTROL
- ▶ ANSWERING FIRE/EMS/LE CALLS FOR SERVICE
- ▶ STAFFING ISSUES
- ▶ COMMUNICATIONS
- ▶ HOSPITAL VISITS/ STAFFING

KEY PLANNING CONSIDERATIONS:

- ▶ Colorado Solar Eclipse AAR
- ▶ Oregon Solar Eclipse AAR

SOLAR ECLIPSE AAR'S:

QUESTIONS

